




South American Tours



Destination Management



-  SAT Global Sales Office
-  SAT Sales Office North America

- ✦ SAT is a leading DMC in South America.
- ✦ SAT has fully-owned incoming offices in Argentina, Brazil, Chile, Ecuador, Peru, Colombia & Uruguay.
- ✦ SAT offers journeys exclusively to the travel trade (B2B).

In numbers

- ✦ 46 years of history - operating since 1973
- ✦ 113 full time employees in 11 offices
- ✦ 10 operating offices in Buenos Aires, Rio de Janeiro, Santiago, Quito, Galapagos, Lima, Cusco, Bogotá, Cartagena & Montevideo
- ✦ 1 sales support office for Europe
- ✦ 1 USD account for all payments – centralized invoicing

Why us?

- ✦ We are a team of experienced industry professionals – a melting pot of international staff and passionate locals that know their destinations by heart, and at the same time are very familiar with international needs.
- ✦ We create unique hand-crafted travel experiences throughout South America for groups and for the individual traveler. Our journeys are built from scratch to fit your individual requirements and budget.





Federico Büker
Owner / CEO



Diana Spehn
GM SAT Peru



Tania Hundertmark
GM SAT Brazil



Christina Herbst
GM SAT Argentina
& SAT Uruguay



Cristina Cáceres
GM SAT Chile



Naylan Zurita
GM SAT Ecuador



Angela Ovalle
GM SAT Colombia



Jutta Zenner
Director of
Sales & Marketing



Andrea Berghäuser
Senior Manager
Product & Sales
Global Sales Office



Kim Melanie Lonny
Manager
Product & Sales
Global Sales Office



Katja Wilhelm
Manager
Product & Marketing
Global Sales Office



Sandra Bleher
Assistant
Product & Marketing
Global Sales Office



- ✦ Tailormade roundtrips and packages for FITs and groups
- ✦ Premium & Boutique Tours
- ✦ Theme Tours, Special Interest Tours
- ✦ Seat-in-Coach Tours with guaranteed departures
- ✦ Cruise Handling



✦ SAT Global Sales Office
✦ SAT Sales Office North America



OUR JOURNEYS

- ✦ **SAT Classics**
Our top selling journeys, stopping by the most iconic places of a destination.
- ✦ **SAT Explorer**
An in-depth discovery of each destination's culture, off-the-beaten-path locations and unique facets.
- ✦ **SAT Theme Tours**
Focus on culinary experiences, photography, music & arts, yoga and more.
- ✦ **SAT Premium**
Highly personalized service and pure indulgence with exclusive accommodation.
- ✦ **SAT Boutique**
Immersive travel experiences that surprise with that certain something.
- ✦ **SAT Romantic Escapes**
A couple's most treasured time together.
- ✦ **SAT Outdoors**
Wildlife, safari, hiking, trekking, biking, horseback riding and more!
- ✦ **SAT Educational Travel**
Student tours that combine exciting explorations and fun learning activities.

- ✦ **SAT Sustainable**
Pure & nature based encounters with the countries and their inhabitants.
- ✦ **SAT Women Travel**
Delightful journeys inspired by women.
- ✦ **SAT Incentives**
One-of-a-kind travel experiences with WOW factor and fun activities that motivate and reward your team.
- ✦ **SAT Cruises & Cruise Handling**
Amazon, Patagonia & Galapagos Cruises.
Shore excursions for cruise liners in all South America.
- ✦ **SAT Seat-in-coach Tours**
Fixed departures guaranteed from 2 pax, more than 25 different itineraries.





Quick Facts

Capital: Lima

Location: Central-West

Language: Spanish

Touristic areas:

- Colonial towns (Lima, Arequipa)
- Incan heritage (Machu Picchu, Lake Titicaca)
- Amazon (Iquitos)
- Pacific Coast (Paracas, Ica)

Lima



World's Leading Culinary Destination:
2012 / 2013 / 2014 / 2015



Arequipa



Arequipa



Cusco – Incan Capital



Machu Picchu





Train to Machu Picchu

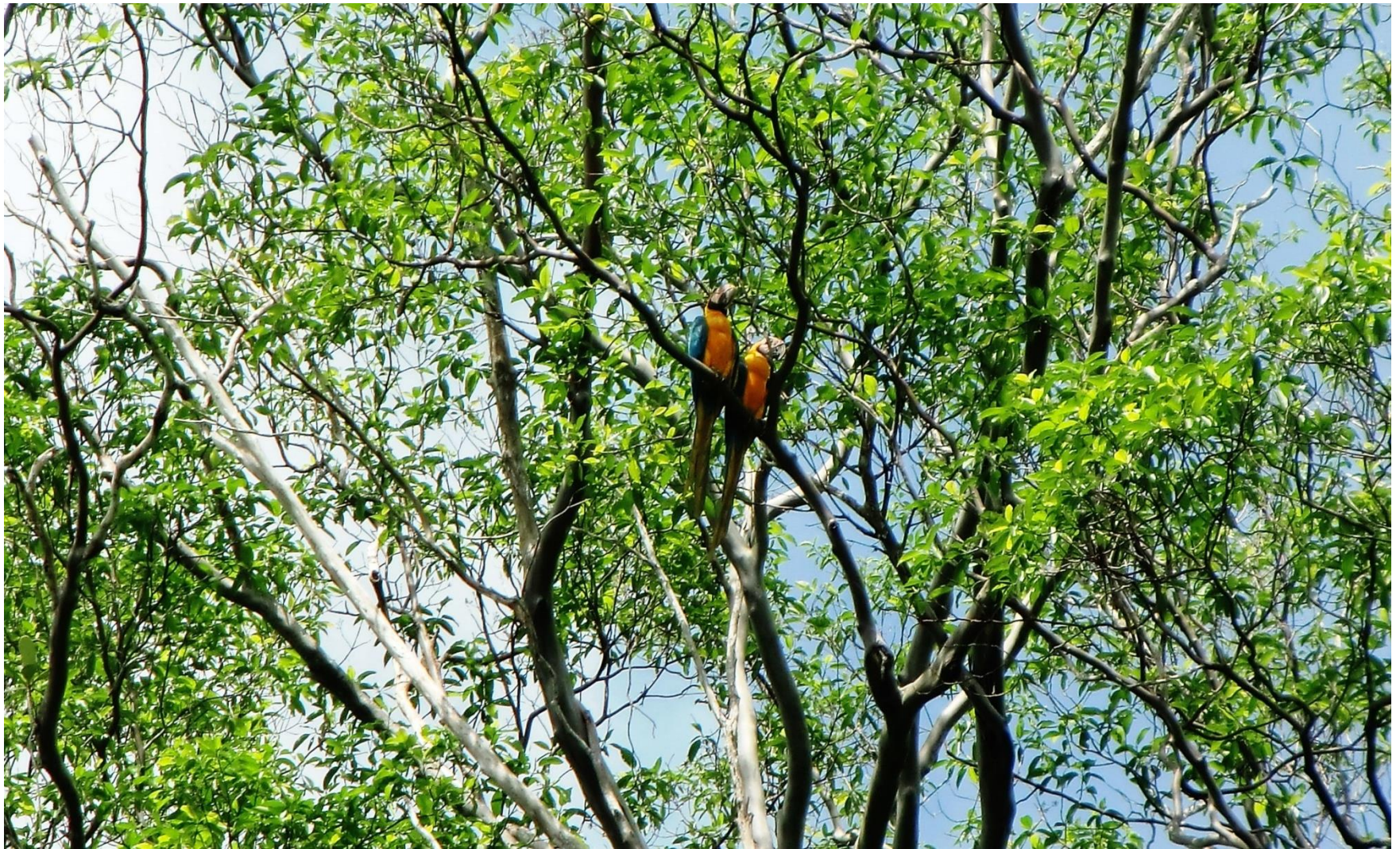


Colourful Markets

Lake Titicaca







Paracas



Ica





Quick Facts

Capital: Sucre

Location: Central

Language: Spanish

Touristic areas:

- Colonial towns (La Paz, Sucre)
- Lake Titicaca
- Potosi
- Salar de Uyuni

La Paz



Sucre











Quick Facts

Capital: Quito

Location: North-West

Language: Spanish

Touristic areas:

- Colonial towns (Quito, Cuenca)
- Andean Highlands (Cotopaxi)
- Amazon (Cuyabeno, Yasuni)
- Pacific Coast (Guayaquil)
- Galapagos Islands



Cuenca





Cotopaxi



Indigenous Markets















Quick Facts

Capital: Brasilia

Location: Central-East

Language: Portuguese

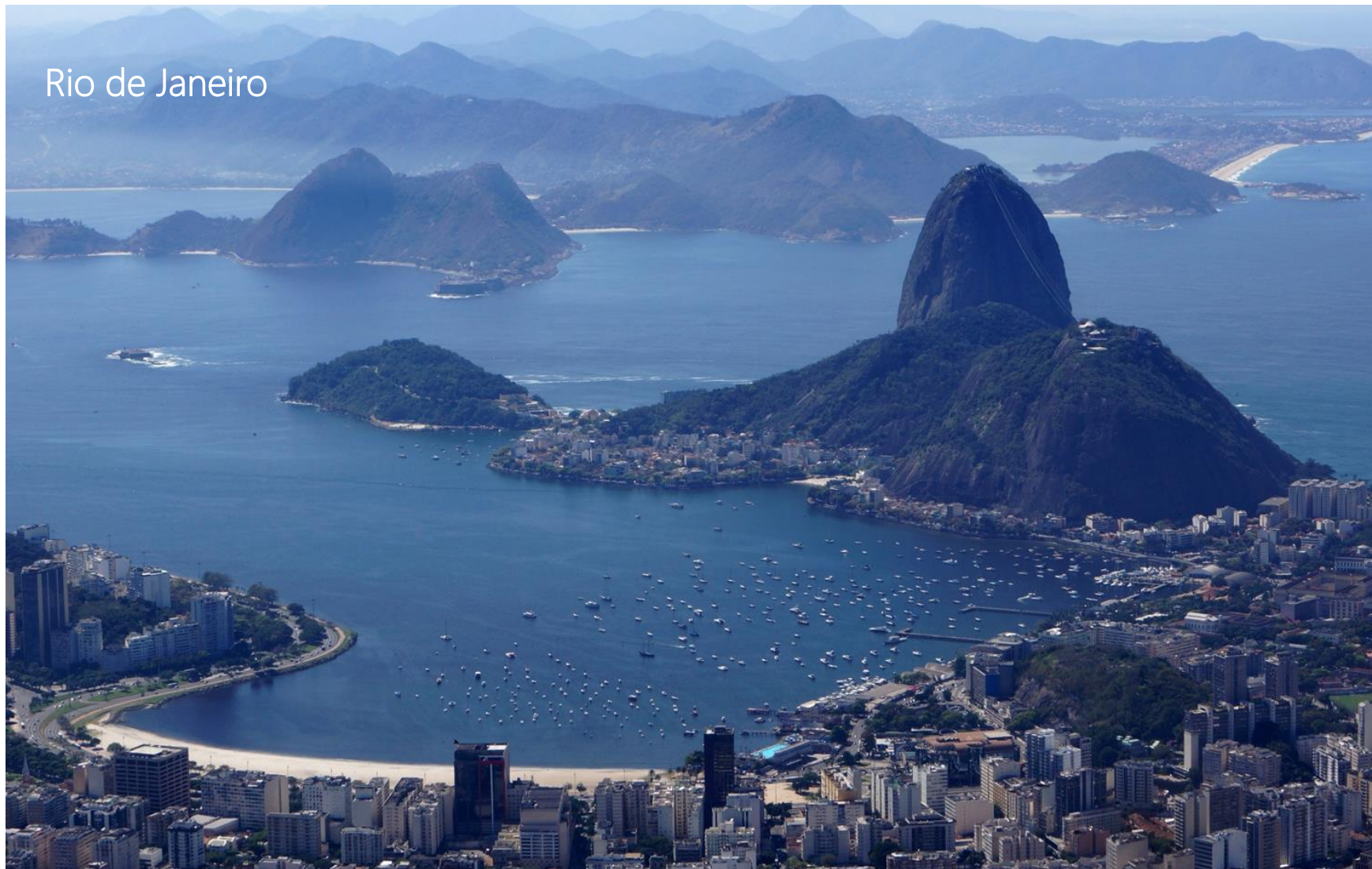
Touristic areas:

- Vibrant Cities
(Rio de Janeiro, Salvador)
- Amazon (Manaus)
- Pantanal
- Iguassu Falls

Rio de Janeiro



Rio de Janeiro





Famous Carnival

Buzios



Salvador de Bahia





Paraty

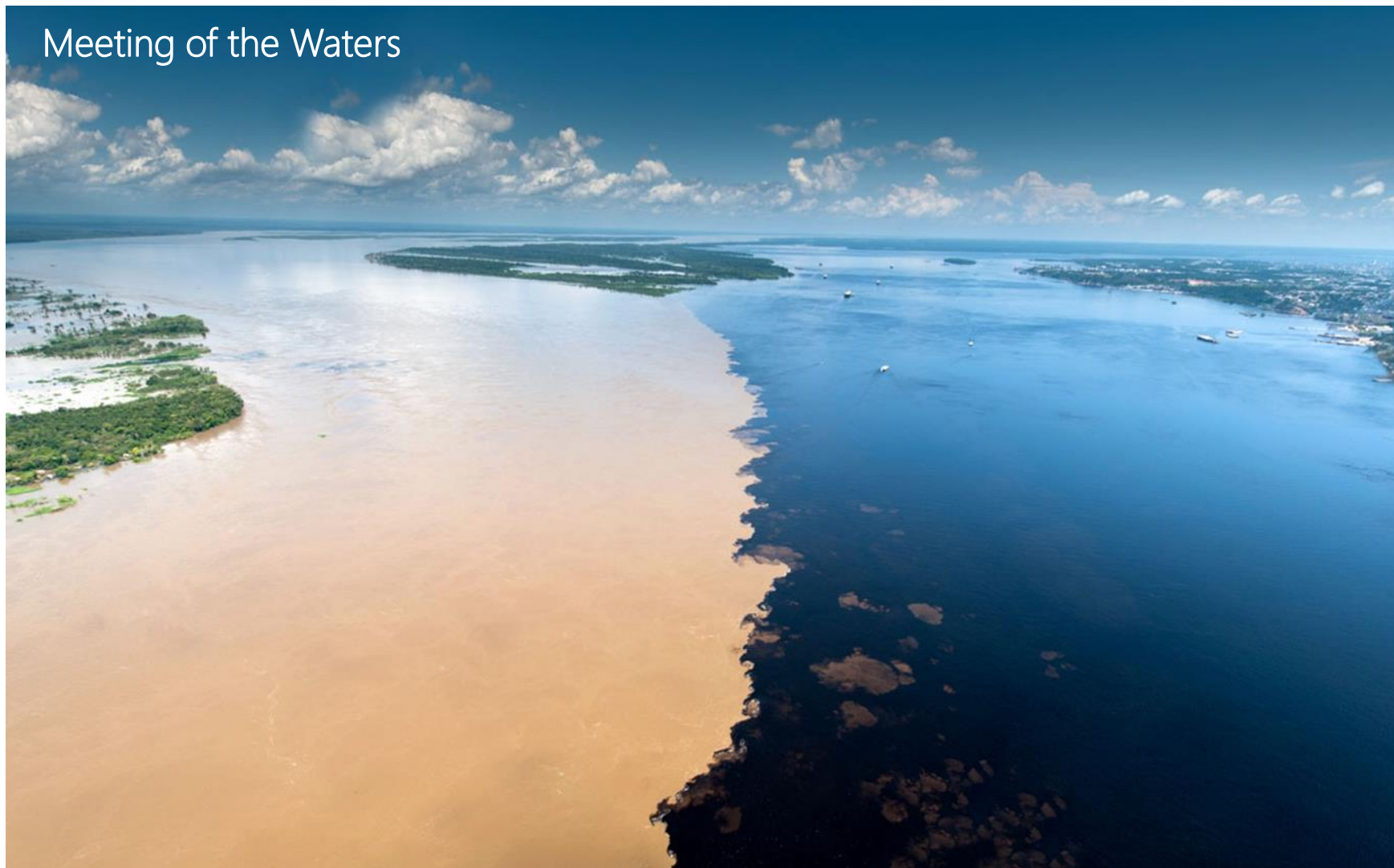


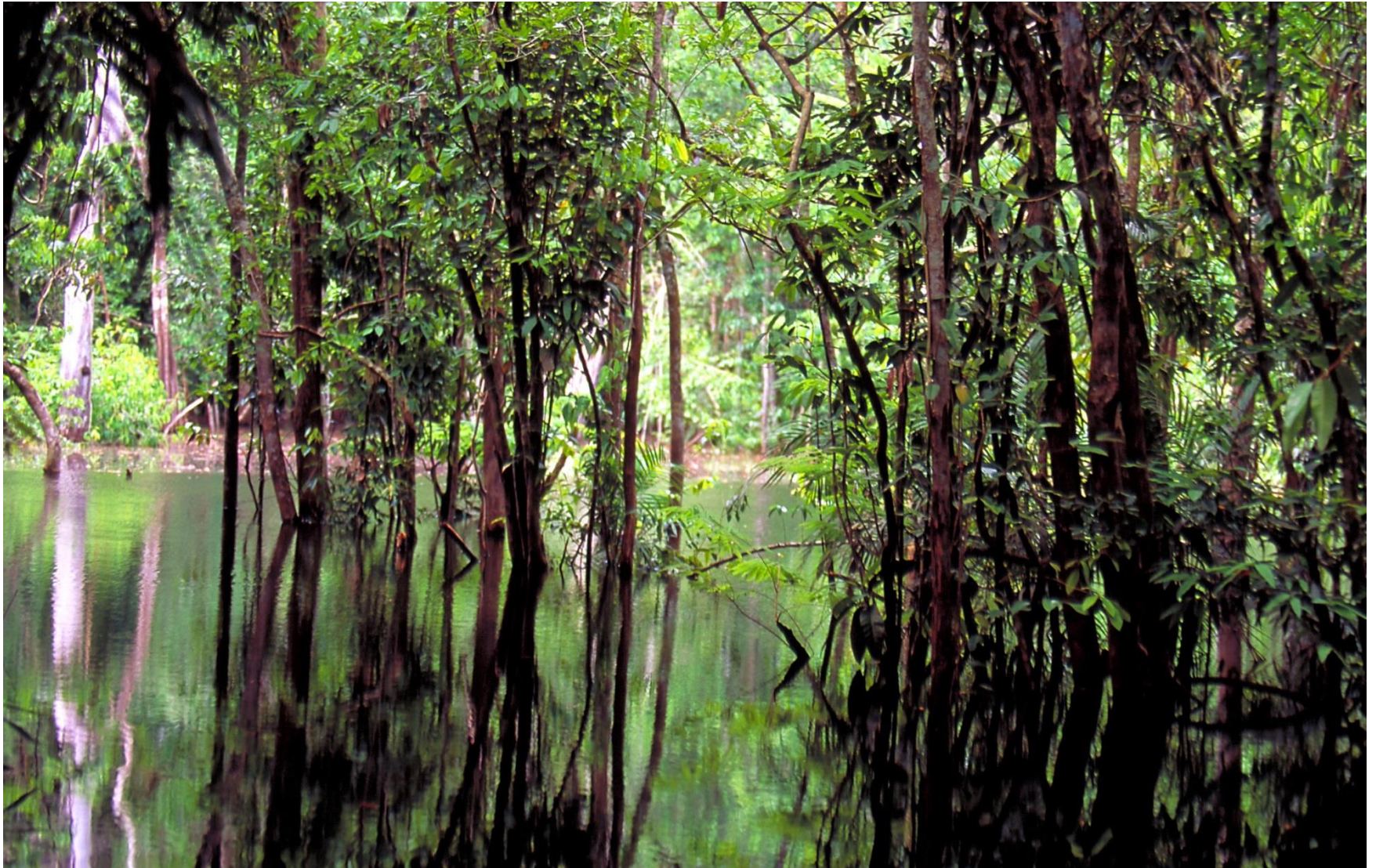
Ouro Preto





Meeting of the Waters











Quick Facts

Capital: Montevideo

Location: South-East

Language: Spanish

Touristic areas:

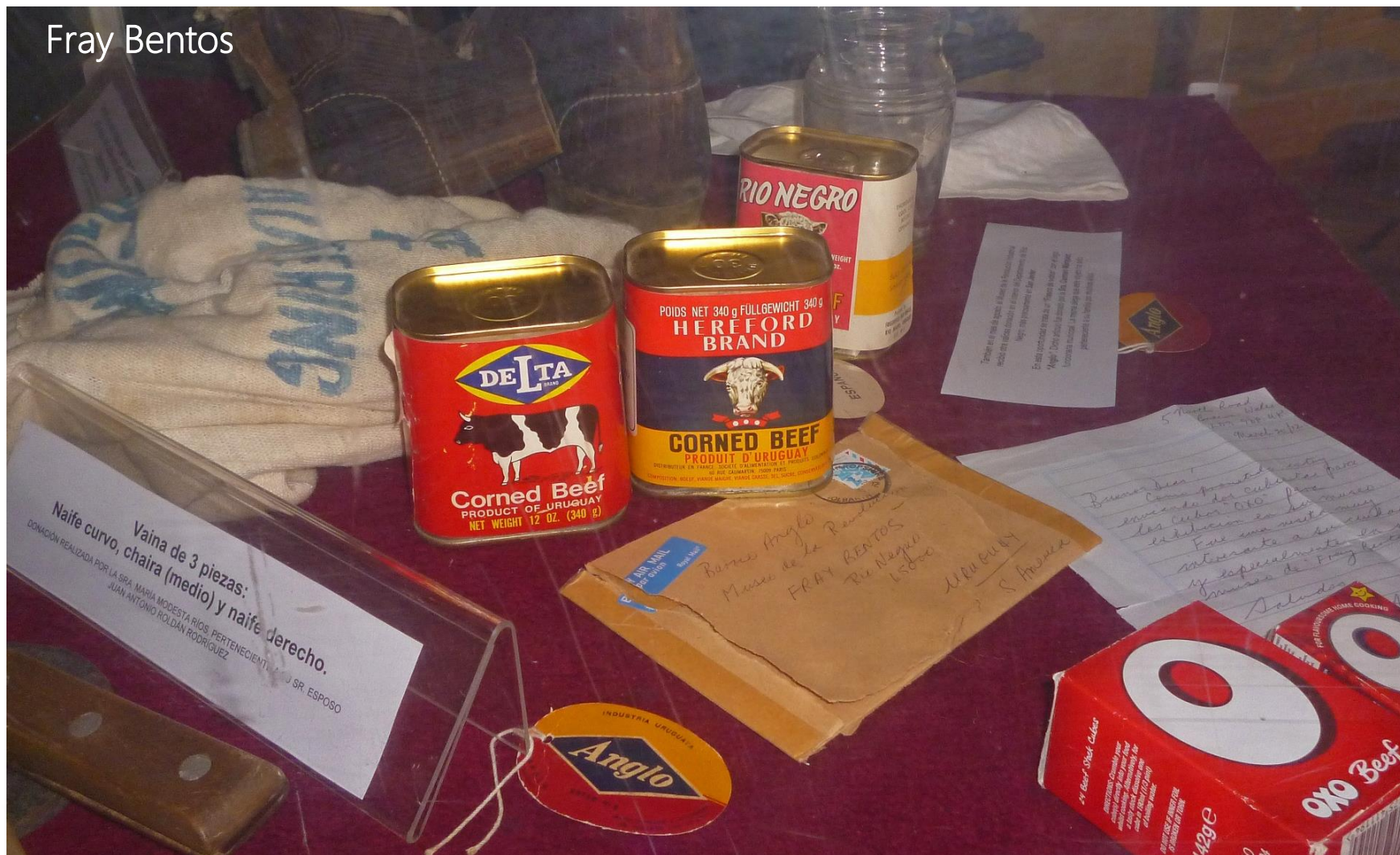
- Colonial Towns
(Montevideo, Colonia)
- Historic sites
(Fray Bentos, Carmelo)
- Atlantic Coast
(Punta del Este, Pinapolis)

Montevideo





Fray Bentos



Carmelo





Punta del Este



Pinapolis





Quick Facts

Capital: Buenos Aires

Location: South-East

Language: Spanish

Touristic areas:

- Vibrant Hub (Buenos Aires)
- Nature (Iguazu Falls)
- Wine Region (Mendoza, Salta)
- Patagonia (Ushuaia, Calafate)

















Puerto Madryn



Whale Watching in Valdés



Mendoza



Area around Salta



QUEBRADA DE HUMAHUACA





Lake District

Ushuaia



El Calafate







Quick Facts

Capital: Santiago de Chile

Location: South-West

Language: Spanish

Touristic areas:

- Cities (Santiago, Valparaíso)
- Atacama Desert
- Lake Region
(Puerto Varas, Chiloé)
- Patagonia
(Torres del Paine)
- Easter Islands

Santiago de Chile











Chiloe Island





Torres del Paine National Park







Quick Facts

Capital: Bogota

Location: North-West

Language: Spanish

Touristic areas:

- Carribbean Coast (Cartagena)
- San Andrés Islands
- Andean Highlands (Bogota, Medellin)
- Coffee Triangle (Salento)
- Amazon (Leticia)
- Tatacoa Desert



Cartagena



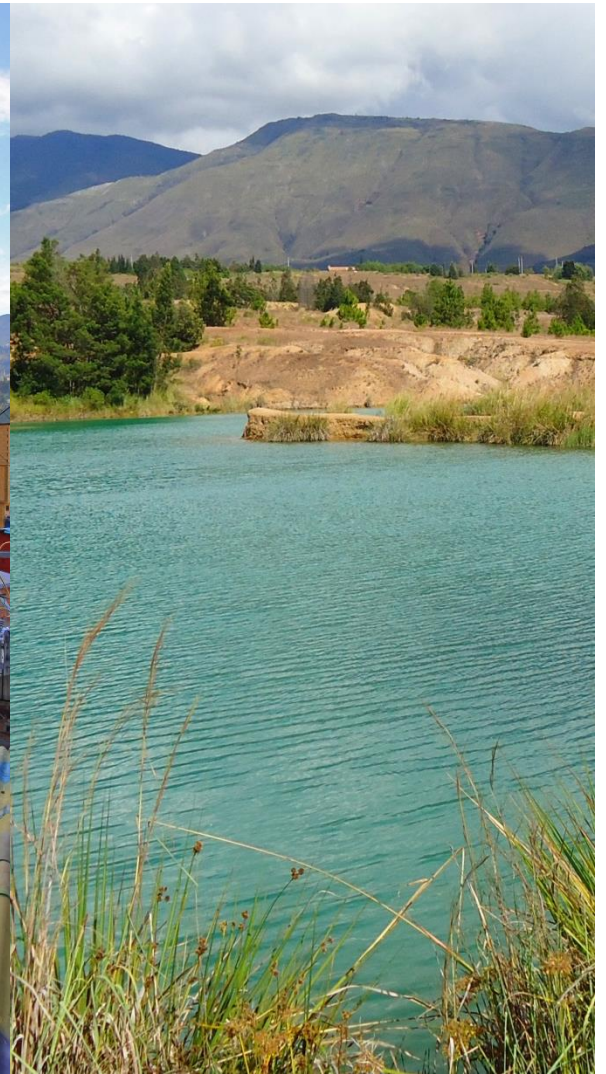
Tayrona National Park



Bogota



Medellin



Villa de Leyva







